



Ten-Stall Unit

The Royal Restrooms Ten-Stall Unit is designed to accommodate larger groups of people. This unit may be combined with additional Royal Restrooms for events such as festivals and sporting functions. It is also ideal for serving those in need during emergency situations, disaster relief efforts, or in any case where power and water sources are not readily available.

The Royal Restrooms Ten-Stall Unit has a male restroom furnished with two sinks, three private stalls, and three urinals. The female restroom is furnished with two sinks and four private stalls. Each restroom has a separate entrance and exit door for smooth traffic flow. Whether used for a special event or emergency situation, Royal Restrooms provides individuals with the comforts of home in clean restrooms featuring:

- Flushing Porcelain Toilets
- Sinks with Running Water
(Hot Water Optional)
- Vanities and Mirrors
- Soap and Hand Towels
- Air Conditioning or Heat
- Dual Handrails and Low Entry Platforms
- Low Level Outdoor Lighting
- Rugs, Pictures, and Flowers
- The Famous Royal Restrooms Mints

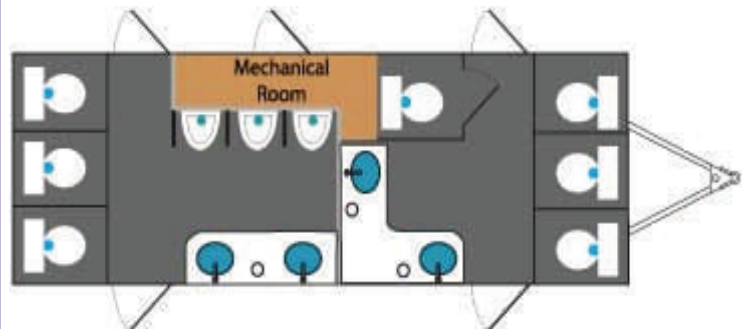
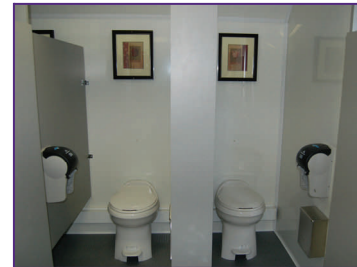
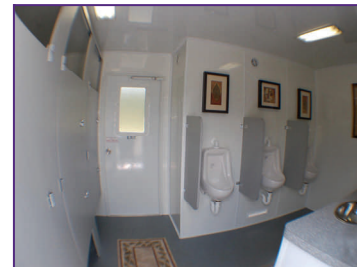
The unique design of Royal Restrooms gives them the mobility to go virtually anywhere. The Ten-Stall Unit is completely self-contained and is operable using two 110 volt 20 amp power sources for the lights and heat or air conditioner. (Unit pulls a maximum of 20 amps.) Water is supplied by a spigot and garden hose or a 200 gallon on-board fresh water holding tank. The unit houses a 700 gallon waste holding tank.

Rental options include daily, weekly, and long-term rentals, generators, additional fresh water holding tanks, and restroom attendant. Pricing and availability may be obtained through your local Royal Restrooms Office. Please visit our website or call the Royal Restrooms Corporate Office at 800.969.7434 for local contact information.

www.RoyalRestrooms.com



**Fundraisers • Special Events • Festivals
Parades • Sporting Events
Disaster Relief**



Unit Dimensions

Length: 28 1/2' (including trailer tongue)

Width: 13' (stairs down)

Height: 11' (from ground to top of A/C unit)

Licensed and Insured